

RECORD OF SURVEY

HOOPER TOWNSITE PLAT A

PART OF SECTIONS 13, 14, 23, AND 24, TOWNSHIP 5 NORTH, RANGE 3 WEST,

AND

PART OF SECTIONS 18 AND 19, TOWNSHIP 5 NORTH, RANGE 2 WEST,

SALT LAKE BASE AND MERIDIAN

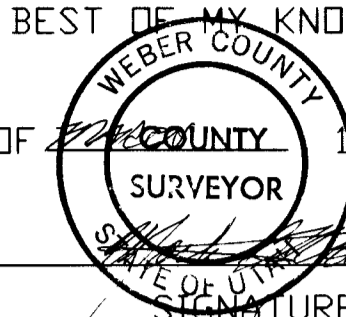
SURVEYOR'S CERTIFICATE

I, MARTIN B. MOORE JR., WEBER COUNTY SURVEYOR, DO HEREBY CERTIFY THAT THIS PLAT WAS PREPARED FROM A SURVEY MADE ON THE GROUND UNDER MY SUPERVISION, AND IN THE CAPACITY OF SAID OFFICE, AND HAS BEEN DRAWN CORRECTLY TO THE DESIGNATED SCALE AND IS TRUE AND CORRECT TO THE BEST OF MY KNOWLEDGE AND BELIEF.

SIGNED THIS 18th DAY OF Feb 1996.

149857

UTAH LICENSE NUMBER



DESCRIPTION

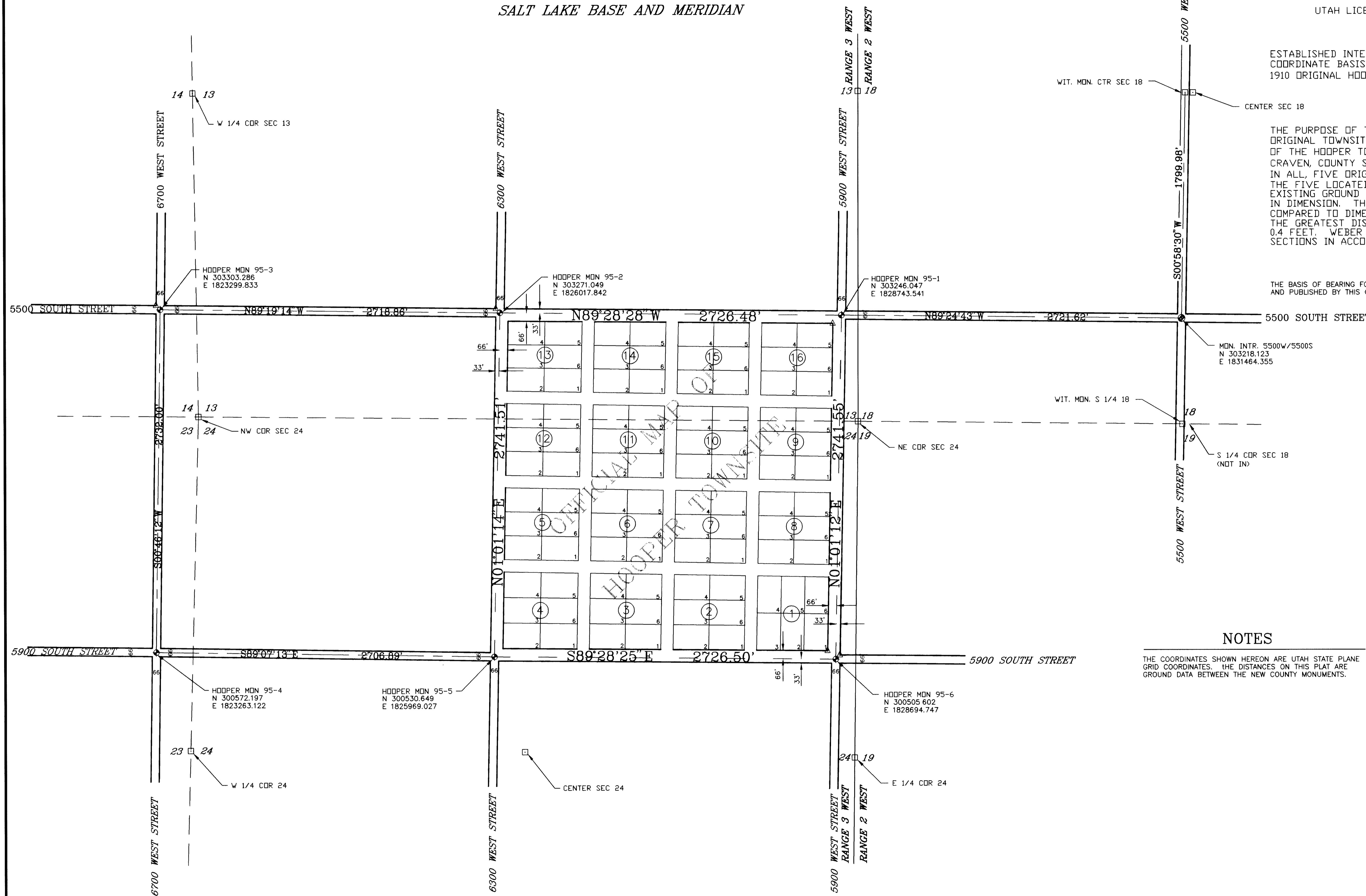
ESTABLISHED INTERSECTION MONUMENTATION (ON STATE PLANE COORDINATE BASIS) ACCORDING TO THE RETRACEMENT FROM THE 1910 ORIGINAL HOOPER TOWNSITE PLAT.

NARRATIVE

THE PURPOSE OF THIS SURVEY WAS TO RETRACE AND LOCATE THE ORIGINAL TOWNSITE CORNERS (AS DEPICTED ON THE OFFICIAL MAP OF THE HOOPER TOWNSITE) SET UNDER THE JURISDICTION OF H.J. CRAVEN, COUNTY SURVEYOR, IN 1910. IN ALL, FIVE ORIGINAL TOWNSITE CORNERS WERE LOCATED. FOUR OF THE FIVE LOCATED WERE FOUND APPROXIMATELY ONE FOOT BELOW THE EXISTING GROUND SURFACE AND MEASURED APPROXIMATELY 0.3'X0.5'X2' IN DIMENSION. THE LINEAR RELATIONSHIPS BETWEEN EXISTING CORNERS COMPARED TO DIMENSIONING FROM THE 1910 PLAT WERE EXTREMELY CLOSE. THE GREATEST DISCREPANCY BETWEEN MONUMENTS DIFFERED NO MORE THAN 0.4 FEET. WEBER COUNTY MONUMENTS WERE THEN PLACED IN SIX INTERSECTIONS IN ACCORDANCE TO THE SAID PLAT.

BASIS OF BEARING

THE BASIS OF BEARING FOR THIS SURVEY IS THE UTAH STATE PLANE GRID BEARINGS AS ESTABLISHED AND PUBLISHED BY THIS OFFICE.



NOTES

THE COORDINATES SHOWN HEREON ARE UTAH STATE PLANE GRID COORDINATES. THE DISTANCES ON THIS PLAT ARE GROUND DATA BETWEEN THE NEW COUNTY MONUMENTS.

LEGEND

- △ FD ORIGINAL TOWNSITE CORNER
- ◆ SET WEBER COUNTY MONUMENT AS A 3 1/4" DIA. BRASS CAP IN CONCRETE
- ⊙ STREET MONUMENT-FOUND BRASS CAP IN CONC
- PRESENT DAY LOCATIONS OF WEBER COUNTY SECTION CORNER MONUMENTS.
- SECTION LINES
- QUARTER SECTION LINES
- MONUMENT LINE
- CENTER LINE OF RIGHT-OF-WAY

<p>Plat Prepared By LARRY L. SLACOWSKI P.L.S.</p> <p>WEBER COUNTY 2510 Washington Blvd. Mezz. #1 Ogden, Utah 84401 (801) 399-8371 DATE 3/15/96</p>	<p>WEBER COUNTY RECORDER</p> <p>ENTRY NO. <u>139402</u> FEE PAID <u>no</u> FILED FOR RECORD AND RECORDED <u>19-Mar-96</u> AT <u>9:27 AM</u> IN BOOK <u>41</u> OF THE OFFICIAL RECORDS, PAGE <u>68</u>.</p> <p>RECORDED FOR: <u>WEBER COUNTY SURVEY</u></p> <p>RECORDED BY: <u>DOUG CROSS</u> WEBER COUNTY RECORDER BY: <u>Eric Palmer</u> DEPUTY.</p>
--	--